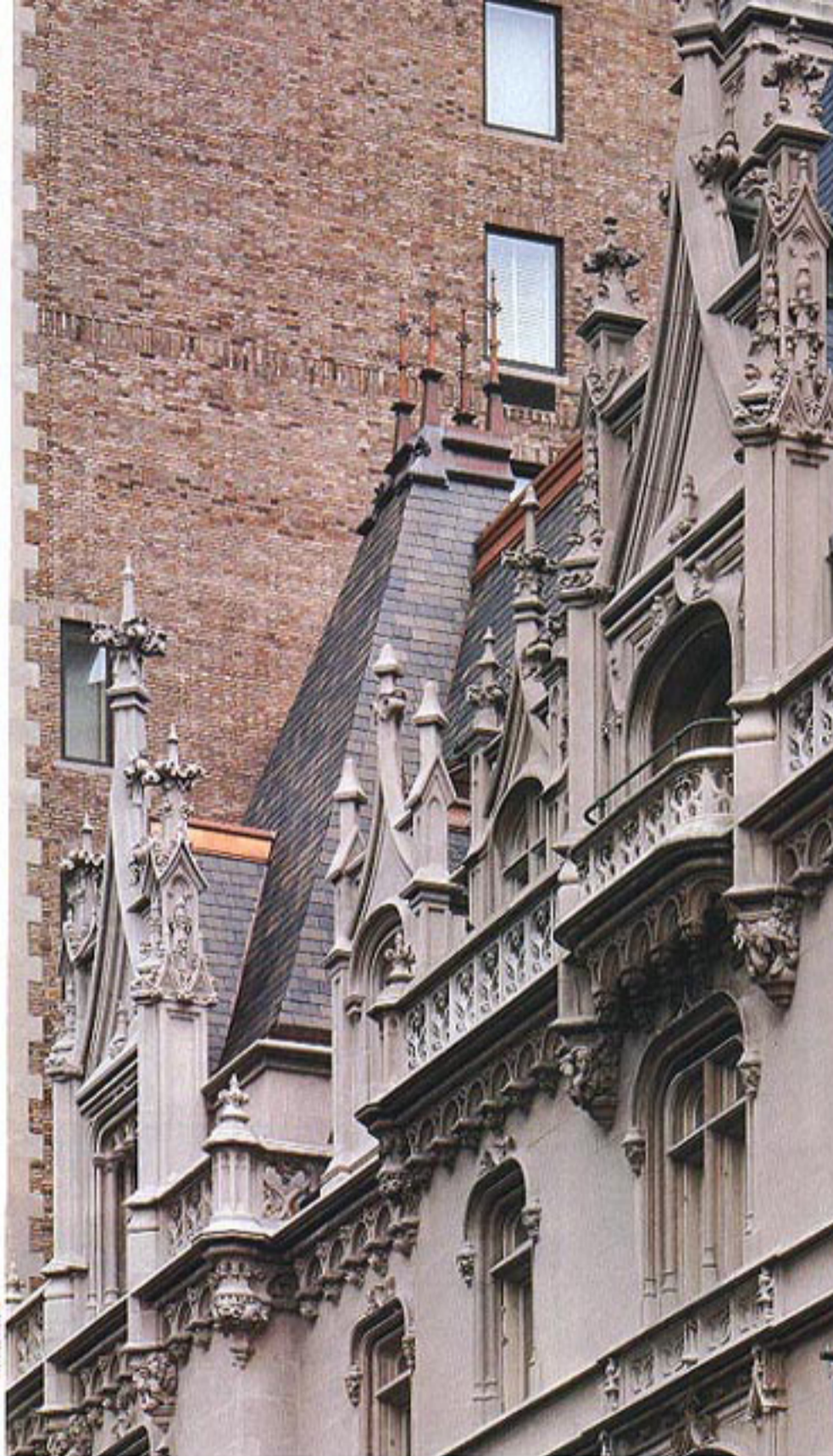




**TOP:** Stone blocks for the Roche addition were carved with computer-automated saws, but final details were added manually by stone carvers. **CENTER:** Limestone was fabricated in sections, then attached to the steel-frame structure much like curtain wall. **ABOVE:** Many of the original facade's details were precisely re-created using innovative computer technology. **RIGHT:** New elaborate roof line (left) is punctuated by replicas of the original limestone dormers and spires (right). **FACING PAGE:** New mansard roofs were constructed of steel frames covered by precast concrete planks, onto which slate shingles were nailed.



ma, Cathedral Stoneworks has created an unusual entity. "The synergy is amazing," says Teitelbaum. "The two companies now provide us with a desirable proprietary product, as well as two hightech fabrication plants capable of handling all kinds of stone and any kind of job from hand carved limestone gargoyles to marble and granite flatwork for 50-story buildings.

"Amazing as it seems," Teitelbaum continued, "we're also entrusted with the job of building the largest Gothic cathedral in the world."

Cathedral Stoneworks is located at 1047 Amsterdam Avenue in New York City. □

